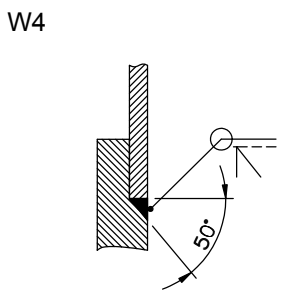
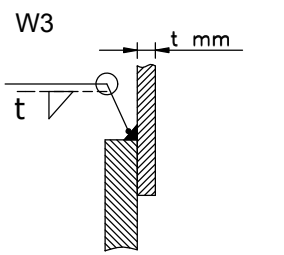
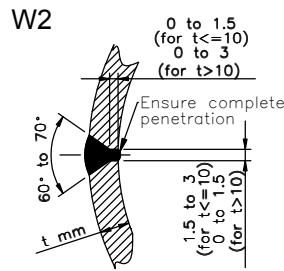
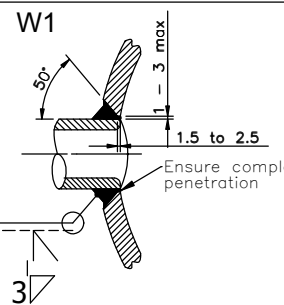


WELDING DETAILS



DESIGN DATA

DESIGN CODE	AS1210 - 1997	
SHELL / UNIT	2 / 2	N/A
SERVICE FLUID	-	
DESIGN PRESSURE	kPa	1000
DESIGN TEMPERATURE	°C	100
OPERATING PRESSURE	kPa	
OPERATING TEMPERATURE	°C	
TEST PRESSURE	HYDROSTATIC PNEUMATIC	kPa 1500
P.W.H.T.		NOT REQUIRED
CORROSION ALLOWANCE	mm	NIL
RADIOGRAPHIC EXAMINATION	%	10
INSULATION		NIL

NOZZLE LISTS

NOZZLE MARK	NO REQ'D	NOM. SIZE	TRICLOVER RATING	SERVICE	REMARKS
N1	1	1.5"	1.5" TRICLOVER	INLET	
N2	1	1.5"	1.5" TRICLOVER	OUTLET	
N3	1	1.5"	1.5" TRICLOVER	PR.GAUGE CONNECTION	
N4	1	1/2"	1/2" TRICLOVER	VENT	

NOTES :-

- ALL DIMENSIONS ARE IN MM.
- ALL SHARP CORNERS TO BE CHAMFERED 0.5 x 45°
- ALL WELD TO BE GROUND SMOOTH & RADIOUSED, ALL BURRS & SHARP EDGES TO BE REMOVED, FINAL SURFACES FINISH.
INTERNAL : MIRROR POLISH < 0.4um
EXTERNAL : MIRROR POLISH < 0.4um
- TOLERANCE ±5mm UNLESS OTHERWISE SPECIFIED
- MATERIAL : SS316L (CONTACT PARTS ONLY)
- MATERIAL CERTIFICATES REQUIRED FOR ALL PRESSURE PARTS.
- REFER TO TOP VIEW FOR TRUE ORIENTATION OF NOZZLES.
- DISHED HEAD INSIDE CROWN RADIUS IS 318MM WITH MIN.THICKNESSOF 3MM AFTER FORMING, INSIDE KNUCKLE RADIUS IS 31.8MM.
- NAME PLATE SHALL BE ETCHED WITH A TEXT HEIGHT OF 3MM (MIN).

CUNO Pacific Pty Ltd
Blacktown NSW Australia
ABN 28 003 075 812

Filter Systems

Mode :- 12ZPB1
Material :- SS316/1.4404
Design :- AS1210
Design Pressure :- 1000 Kpa
Design temp. :- 100 °C
Approval No. :-
Serial No. :-
Test Pressure :- 1500 Kpa
Test Date :-

CUNO Pacific Pty Ltd
Blacktown NSW Australia
ABN 28 003 075 812

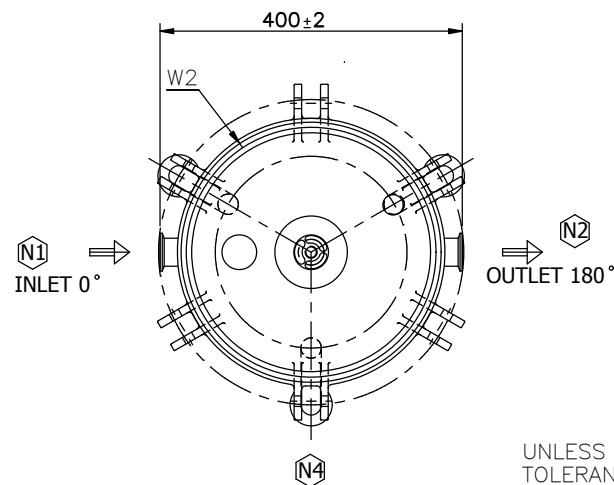
Filter Systems

Mode :- 12ZPB2
Material :- SS316/1.4404
Design :- AS1210
Design Pressure :- 1000 Kpa
Design temp. :- 100 °C
Approval No. :-
Serial No. :-
Test Pressure :- 1500 Kpa
Test Date :-

NAME PLATE FOR 12ZP1

NAME PLATE FOR 12ZP2

ELEVATION VIEW
(SEE TOP VIEW FOR NOZZLES TURE ORIENTATION)



TOP VIEW WITHOUT DOME

UNLESS OTHERWISE SPECIFIED TOLERANCES ARE AS FOLLOWS:
X = +/- 1mm
X.X = +/- 0.5mm
X.XX = +/- 0.1mm
X.XXX = +/- 0.05mm

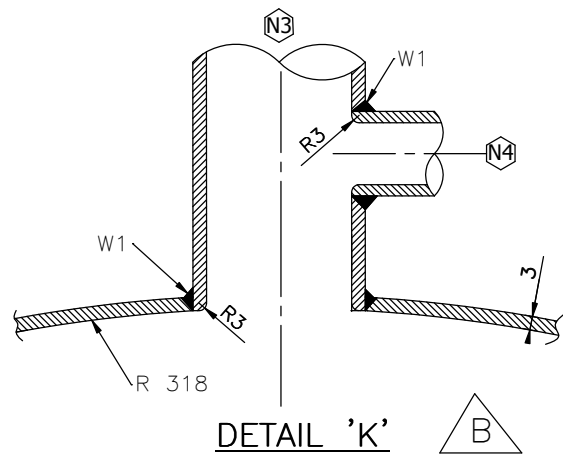
HOUSING INFORMATION

PART NUMBER	12 ZP1	12 ZP2
CAPACITY (LIT)	36	59
A (MM)	355	645
H (MM)	860	1150
C (MM)	1300	1885

This document is the property of CUNO Pacific Pty Ltd and is submitted for use only in connection with work authorized or proposed by the company. It should not be used or duplicated for any other purpose and is to be returned to CUNO Pacific Pty Ltd when no longer required for such purposes.

Item	Description	Material	SCH / THK	Q'ty REQ'D	SPARE	Remarks
14	FLANGE	SS316L/1.4404		1		ID318 x OD 354 x 45 THICK
13	WASHER	TEFLON		1		180078
12	CARTRIDGE NUT ASSY.	-		1		270098
11	CENTER ROD	SS316L/1.4404		1		170222
10	BAFFLE PLATE	SS316L/1.4404		1		190295-00
9	MOUNTING FOOT	SS304/1.4301		3		-
8	OUTLET PIPE	SS316L/1.4404		1		38mm OD WITH 1.5" TC
7	INLET PIPE	SS316L/1.4404		1		38mm OD WITH 1.5" TC
6	MOUNTING LEG	SS304/1.4301		3		φ27
5	SWING-BOLT ASSY.	SS304/1.4301		6		5/8" BSW x 130 LONG
4	HANDLE	SS304/1.4301		2		φ19
3	"O" RING	SILICONE		1		ID 329.57 x OD 343.55 x 6.99 CS
2	SHELL	SS316L/1.4404	3 mm	1		-
1	BASE	SS316L/1.4404	25 mm	1		120540

MATERIAL LIST



DETAIL 'K'

CUNO Pacific Pty. Ltd.
Blacktown, NSW Australia

TITLE: GA FOR 12ZP 1 & 2 HEIGHT MODULE FILTER HSG.

ISSUE DESCRIPTION	DATE	APPRV'D
B DETAIL 'E' REVISED AS PER MANUFACTURER'S RECOMMENDATION	2005 25/5/06	PLG
A ISSUE FOR CONSTRUCTION	2005 11/5/06	PLG

DRAWN	CMW	4/5/06
CHECKED	PLG	10/5/06
APPRV'D	PLG	11/5/06

A3	DWG NO. 110651/SHT 1	STATUS I	ISSUE B
-----------	-----------------------------	-----------------	----------------

DO NOT SCALE OFF DRAWING

NEXT ASSEMBLY: -

SCALE:1:10 SHEET 1 OF 1